

Comparison of Numerical Performance of Mathematica 12.1 and Maple 2020

Summary

While Maple claims support for a significant subset of the numerical computations performed by Mathematica, in most cases, much faster methods have been implemented in Mathematica.

Over a test suite of 586 tasks, covering different operations on different types of numerical data, Mathematica was faster in 566 cases. The median difference measured found Mathematica to be more than 45 times faster than Maple.

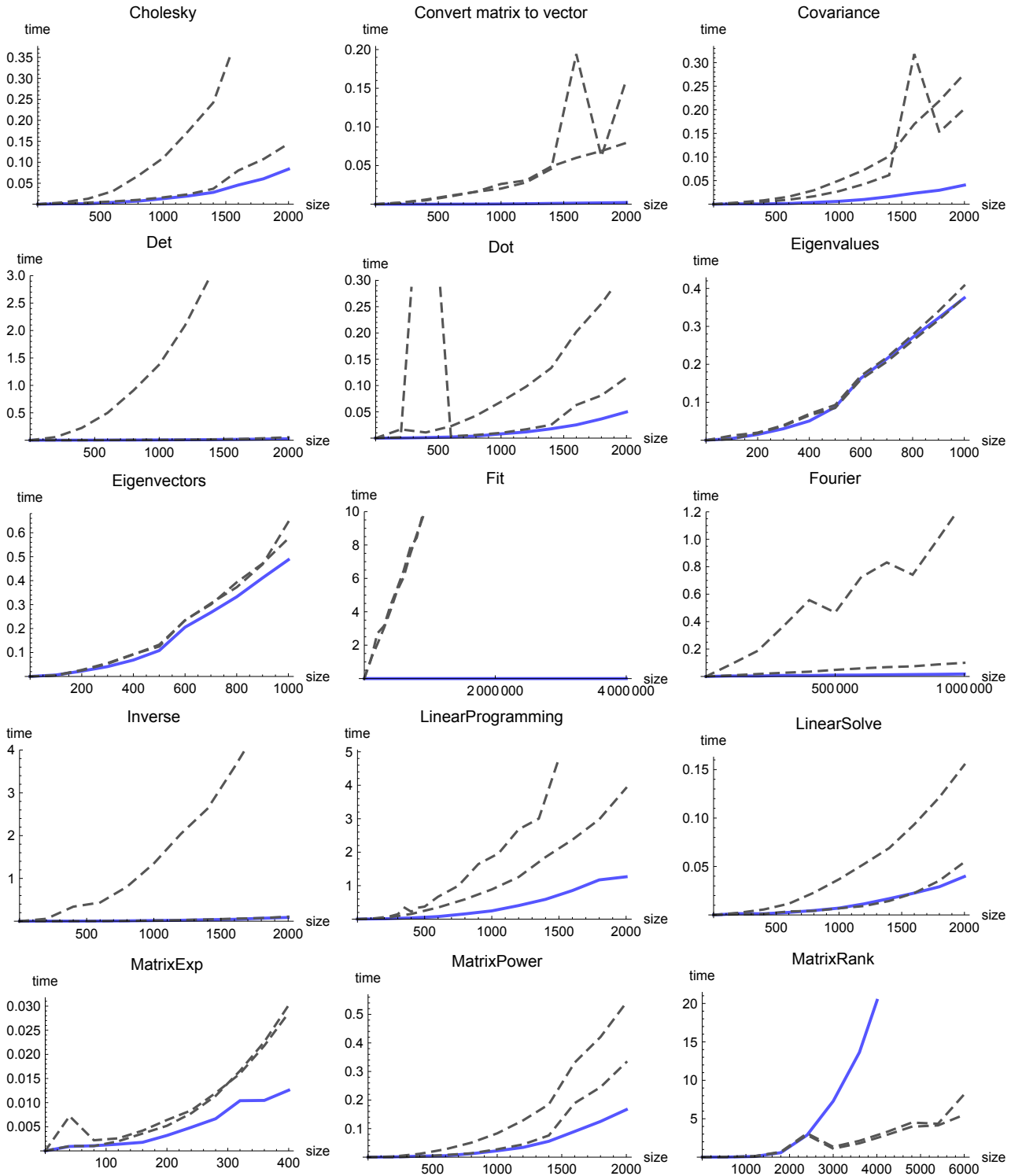
Category	Tests	Median Mathematica speed
Real data operations	20	9 times faster
Real data operations (manual type override)	20	2 times faster
Complex number data operations	16	4 times faster
Complex number data operations (manual type override)	16	4 times faster
Sparse real data operations	7	32,000 times faster
Integer data operations	14	48 times faster
Integer data operations (manual type override)	13	48 times faster
Extended precision data operations (50 digits)	16	7 times faster
Extended precision data operations (1,000 digits)	16	4 times faster
Random number generation	9	6 times faster
Elementary & special functions	90	3,066 times faster
Elementary & special functions (manual type override)	66	22 times faster
Complex elementary & special functions	90	62 times faster
Complex elementary & special functions (manual type override)	90	78 times faster
Elementary & special functions (50 digits)	90	76 times faster
High-precision function evaluation	9	37 times faster
Exact functions	4	16 times faster
Total	586	45 times faster

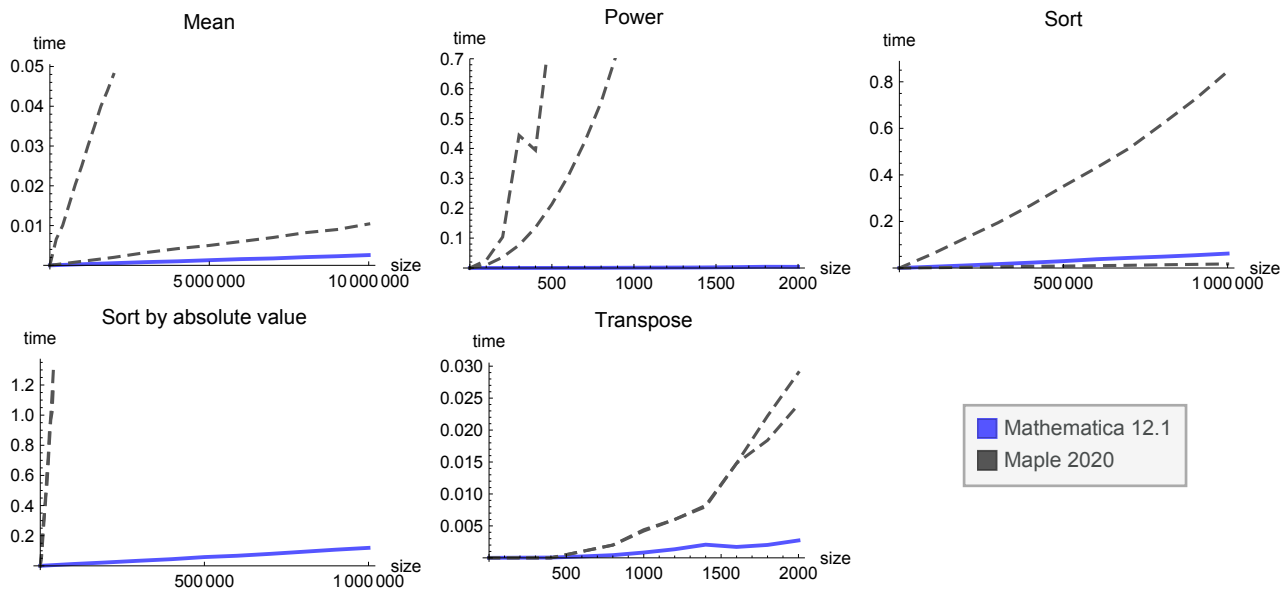
Tests were performed using Mathematica 12.1 and Maple 2020 running on Windows 7 64-bit with 3.07 GHz quad-core Intel i7 processor with 24 GB of RAM. CUDA tests used a Tesla C2050/C2070 GPU with 448 cores and 2.5 GB of RAM.

Machine-Precision Real Linear Algebra

To achieve the very best performance in Maple, you must often use manual type control. This requires declaring items in a dataset to all be of the same number type as it is initialized. The penalty of this approach is that such Maple code will fail if any value is used that does not comply with the type declaration. Since it is not always easy to predict whether operations will potentially yield complex numbers, large numbers or symbolic results, the default data type for all Maple operations is “anything”, and most user code uses this type. Both manual and default Maple data type timings are shown in these comparisons.

Mathematica operations are 2 times faster than Maple’s inflexible (`float[8]`) data type and more than 9 times faster than its default type.



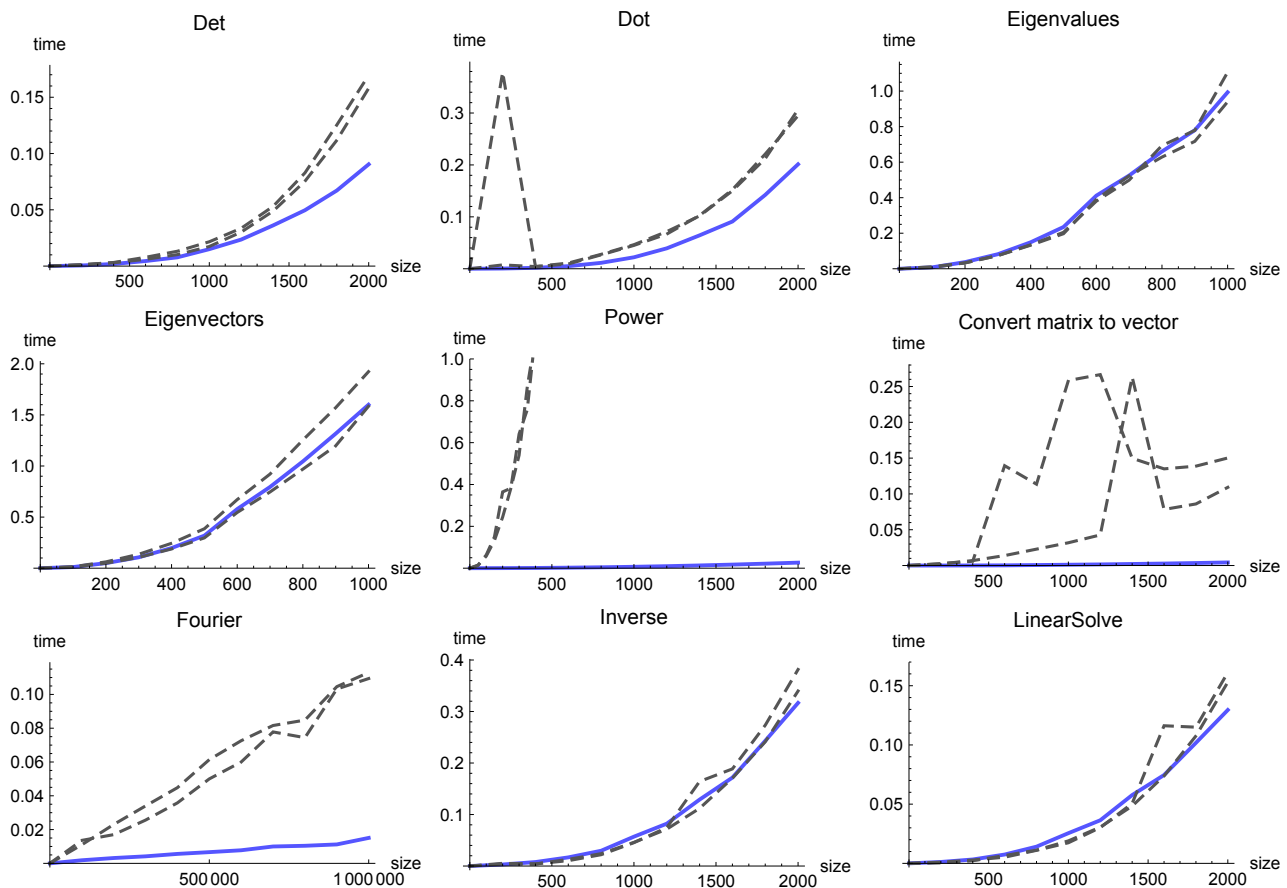


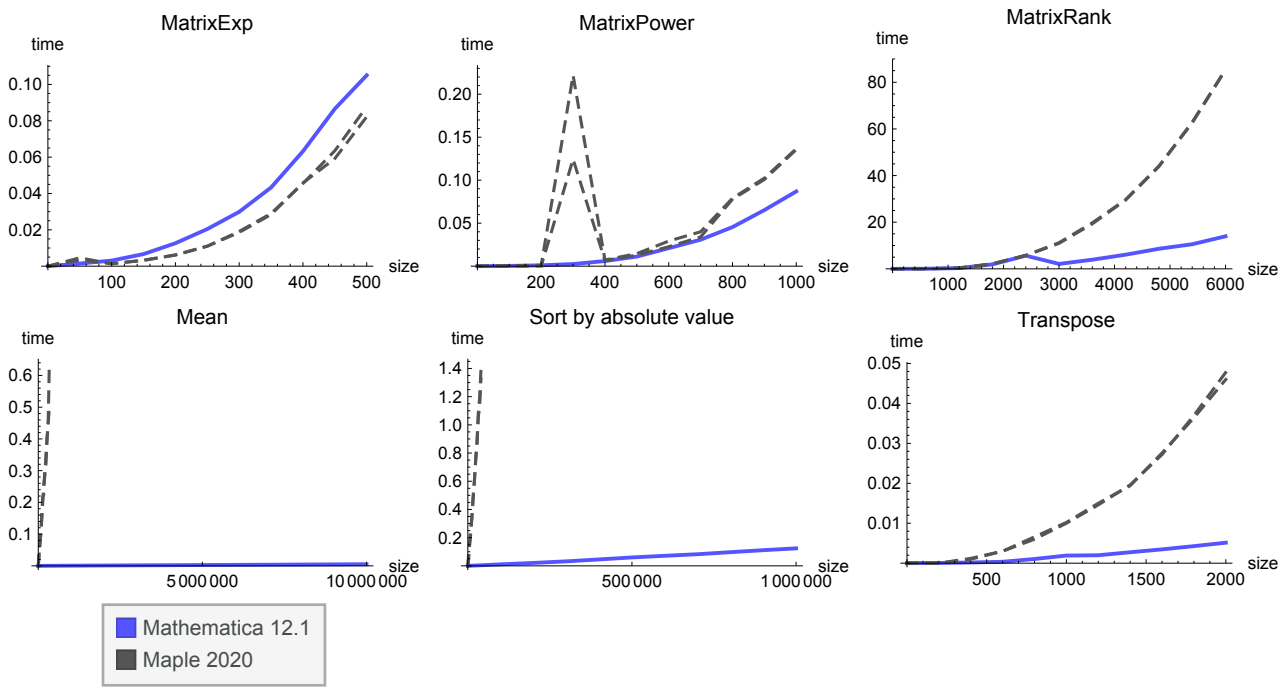
Implementation notes

All tests were performed using the documented commands in each system.

Machine-Precision Complex Linear Algebra

For complex numbers, there is little advantage to manually setting the data type in Maple. Mathematica is more than 4 times faster.



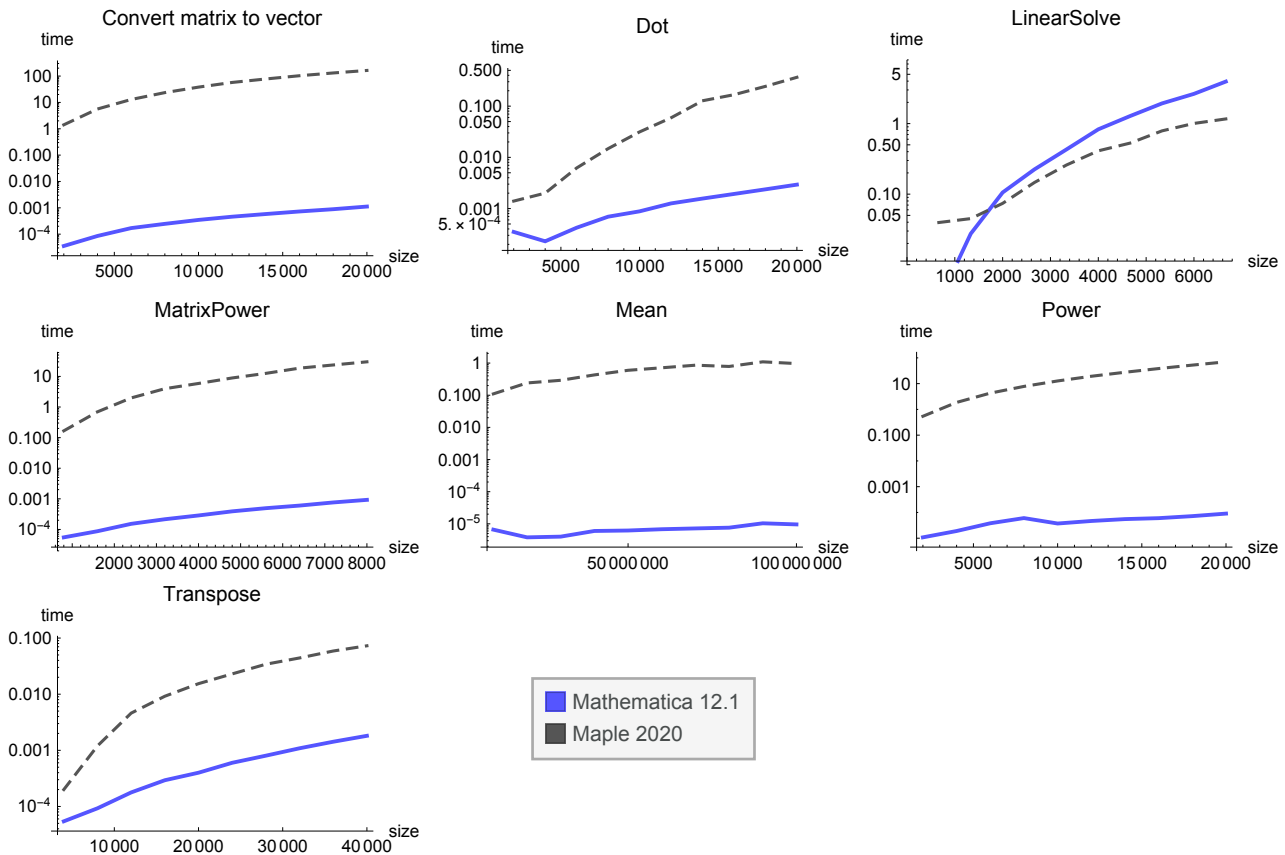


Implementation notes

Functions in Maple's `Statistics` packages work only on real numbers. For this reason, the `Mean` operation has been implemented using Maple's `add` command. All other tests were performed using the documented command in each system.

Sparse Data

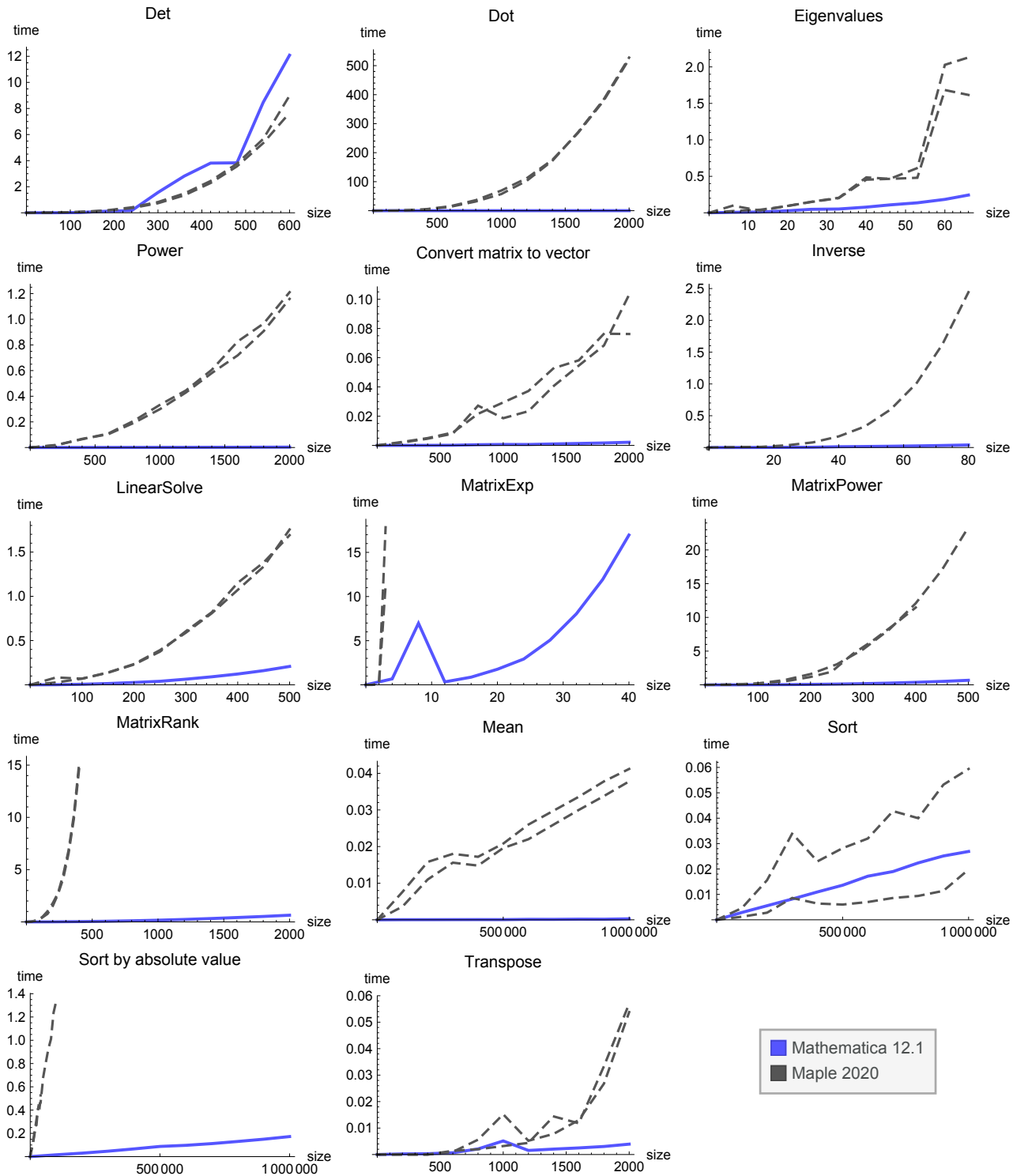
Maple and Mathematica both provide sparse data storage; however, Maple appears to have only implemented sparse methods for `LinearSolve` and `Transpose`. During the test, Maple's `LinearSolve` command generates a large number of messages stating, "Warning, solution did not converge within 200 iterations," suggesting that it may not have completed the task for some problem sizes. Note that data is shown on a log scale, since the difference in performance is too great to display on a linear scale.



Tests for which neither system has sparse methods have been omitted since these would be a repeat of the dense tests above.

Integer Linear Algebra

Both Mathematica and Maple can perform exact integer arithmetic; however, again the Maple implementation does not seem to include many optimized integer algorithms. One of the biggest differences is seen with perhaps the most important matrix operation—multiplication (`Dot`)—where Mathematica was more than 7,600 times faster. The median difference measures Mathematica to be more than 48 times faster when Maple is used with the special `integer[8]` data type and more than 48 times faster when it is not.



Implementation notes

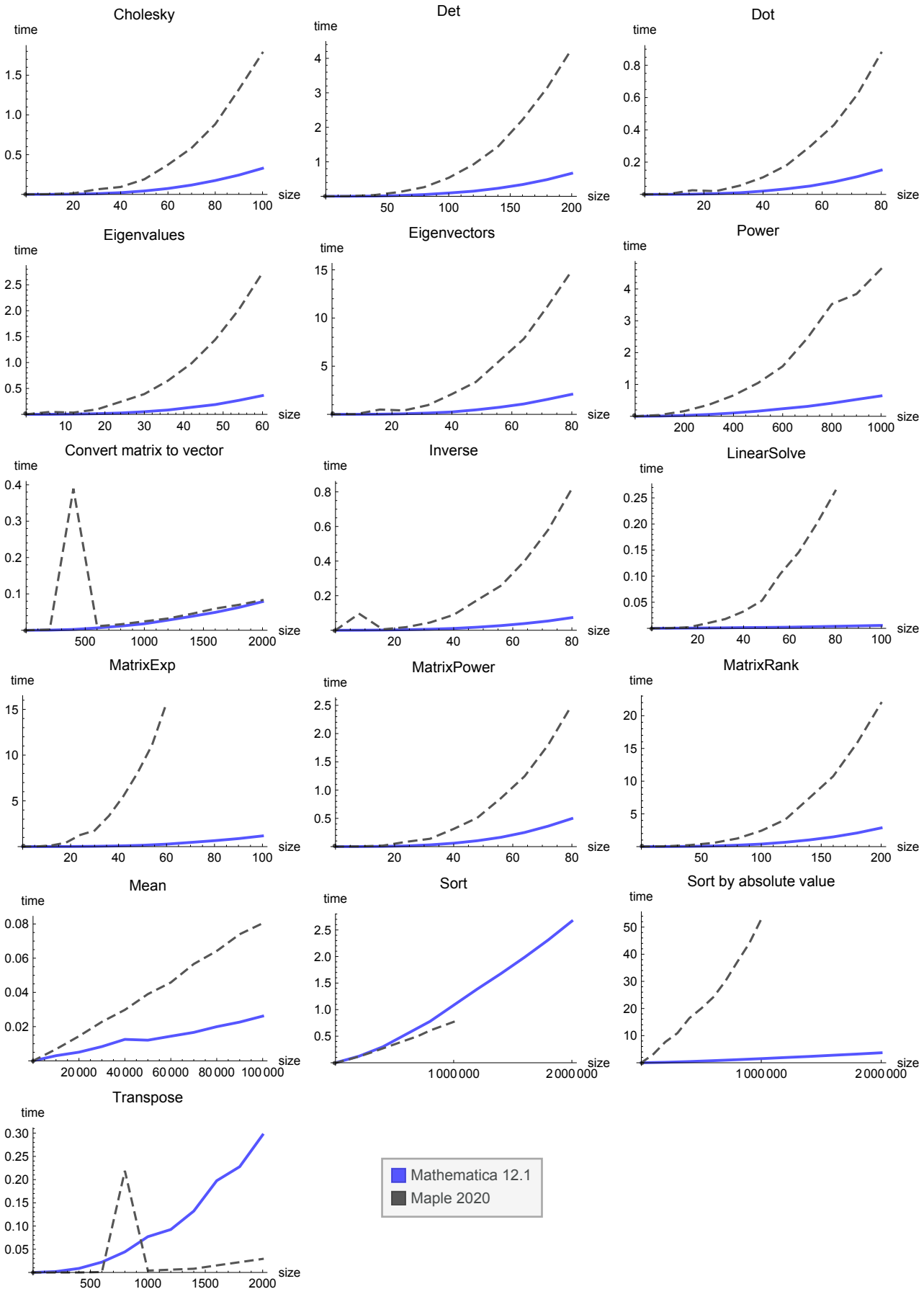
Functions in Maple's `Statistics` packages are limited to machine-precision numbers only. For this reason, the `Fit` test has been omitted and `Mean` has been implemented using the `add` command.

Maple cannot evaluate the `Inverse` task using the `integer[8]` type, so only default data type results are shown for this test.

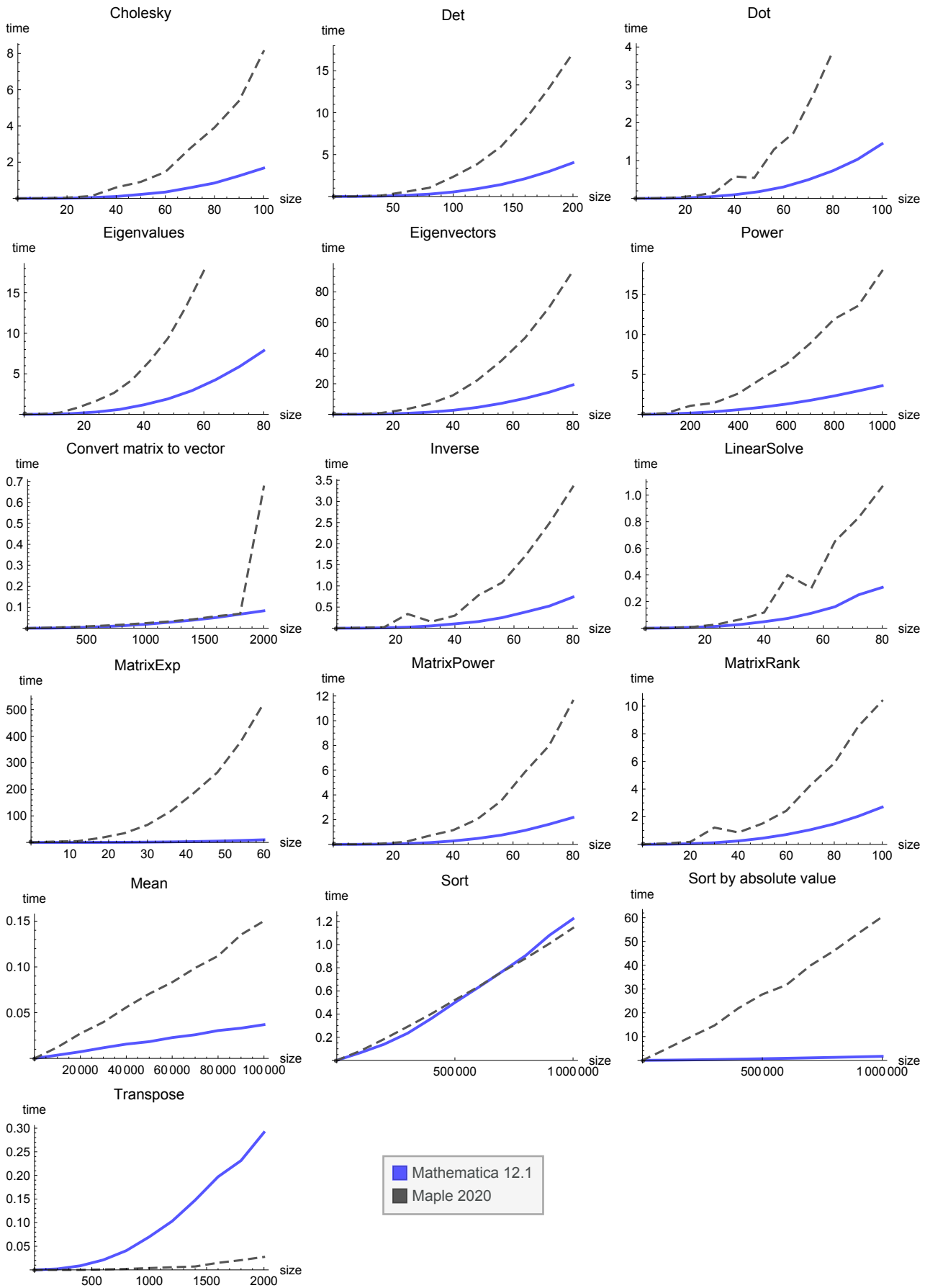
Maple cannot evaluate `MatrixPower` with `integer[8]` matrices of size 500x500 or above.

Extended-Precision Data

Both Mathematica and Maple handle arbitrary-precision arithmetic. Only Mathematica tracks the number of reliable digits in the results of such calculations, and yet despite doing this additional validation work, Mathematica was 76 times faster for 50-decimal-place matrix computations.



At 1,000-digit precision, much more of the work is done by the GMP library, but Maple is still 4 times slower than Mathematica.

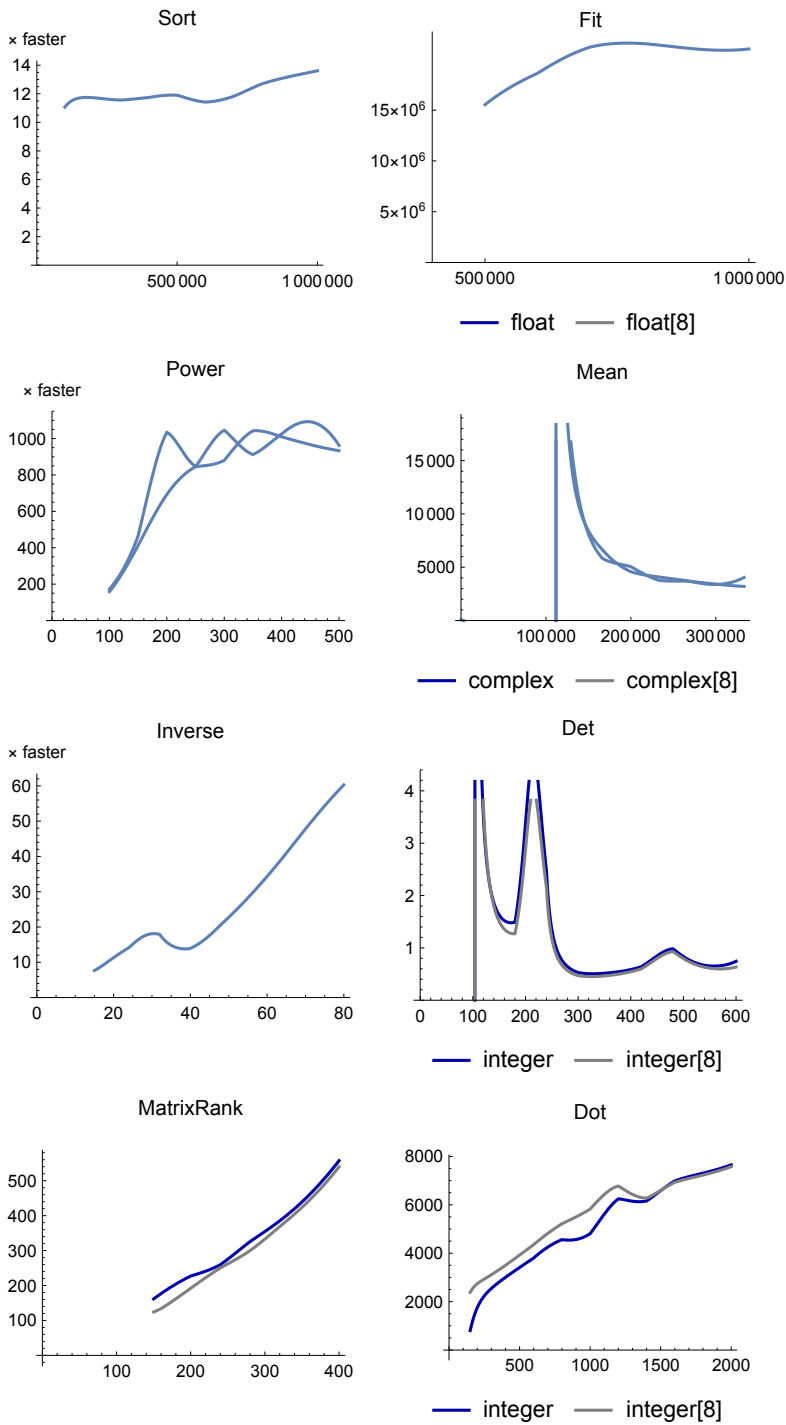


Implementation notes

Some Maple functions are limited to machine-precision numbers. For this reason, tests for `Fit` and `Fourier` have been omitted and `Mean` has been implemented using `add`.

Scalability of Data Operations

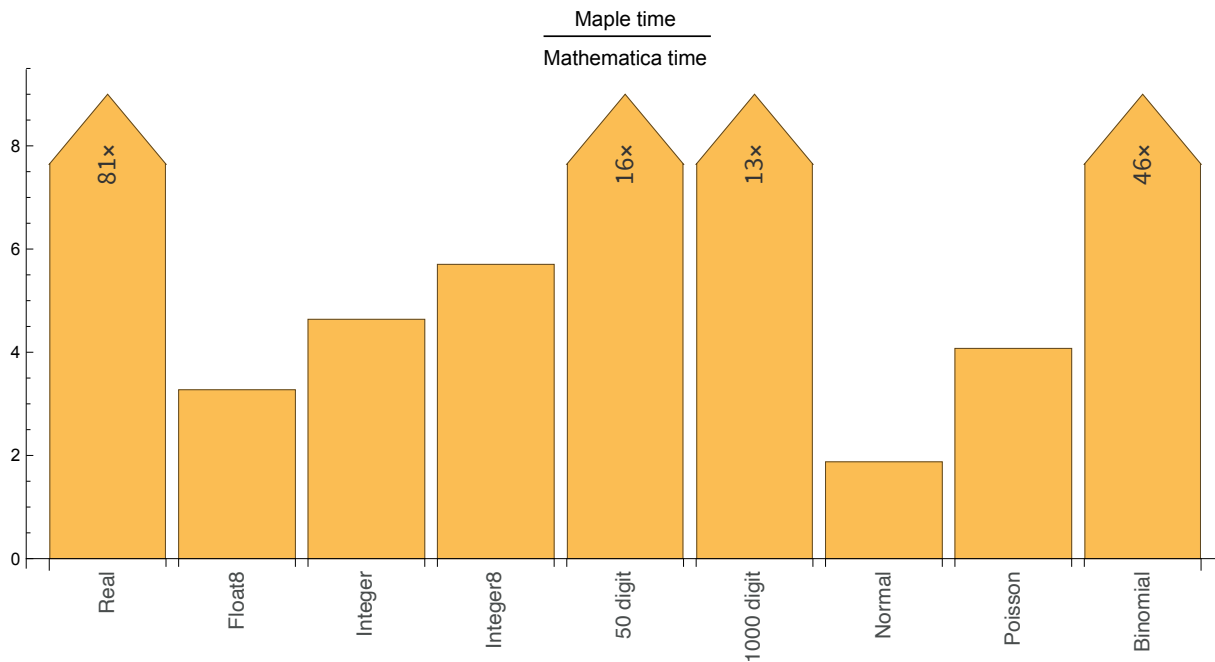
The ratio of Maple's performance to Mathematica's is mostly fairly independent of problem size; however, a few of the operations tested in the preceding sections have been implemented in Maple with poorly scaling algorithms. The larger the problem size, the more Mathematica will outperform Maple for these operations.



Random Numbers

Median performance for random number generation shows Mathematica to be more than 6 times faster than Maple.

Matrices with 2,000 x 2,000 elements were generated for each number type using a uniform distribution $[-10,10]$. Normal, Poisson and binomial distributions were used to create a vector of 10^7 samples.



Implementation notes

Documented Maple commands were used in all cases.

Maple's default type for reals and its special `float[8]` data generation were both compared to the default data type in Mathematica.

Maple's default type for integers and its special `integer[8]` data generation were both compared to the default data type in Mathematica.

Maple's Poisson and binomial distributions (and other discrete distributions) generate real numbers, while Mathematica correctly generates integers.

Function Evaluation

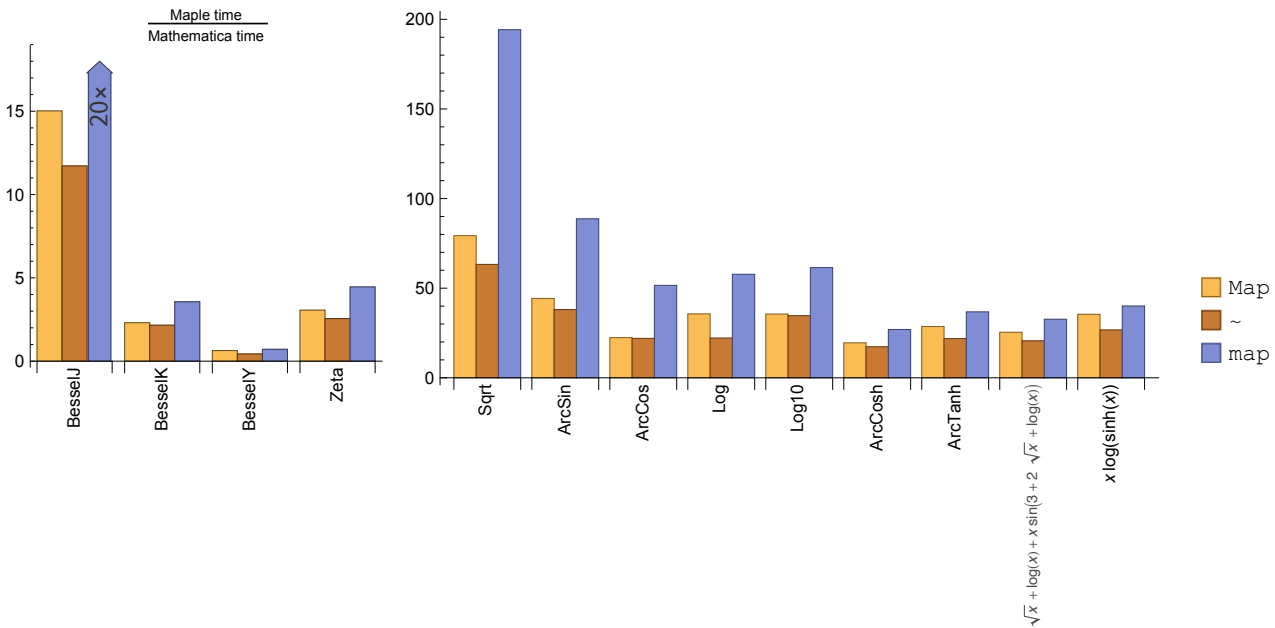
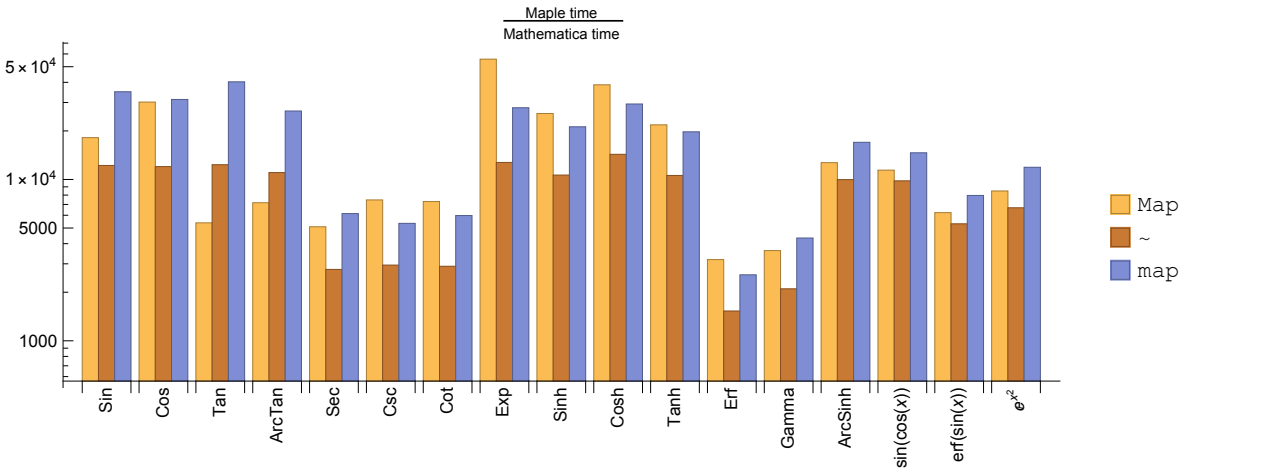
Getting Maple to apply other functions to data with optimal performance is a complicated task with a choice of tools for mapping the functions over the data and a choice of data types. Different circumstances require different choices and are often a tradeoff between performance and flexibility or code robustness. In the following tests, each combination of the Maple commands `map`, `MAP` and `~` together with appropriate default and manual data specifications have been compared to Mathematica's `Map` command applied to the default data type.

Maple's `map` command is functionally equivalent to Mathematica's `Map`, while Maple's `MAP` is destructive (it replaces the original data so extra work would be needed if one wanted to preserve or reuse the input data.).

10
Reals

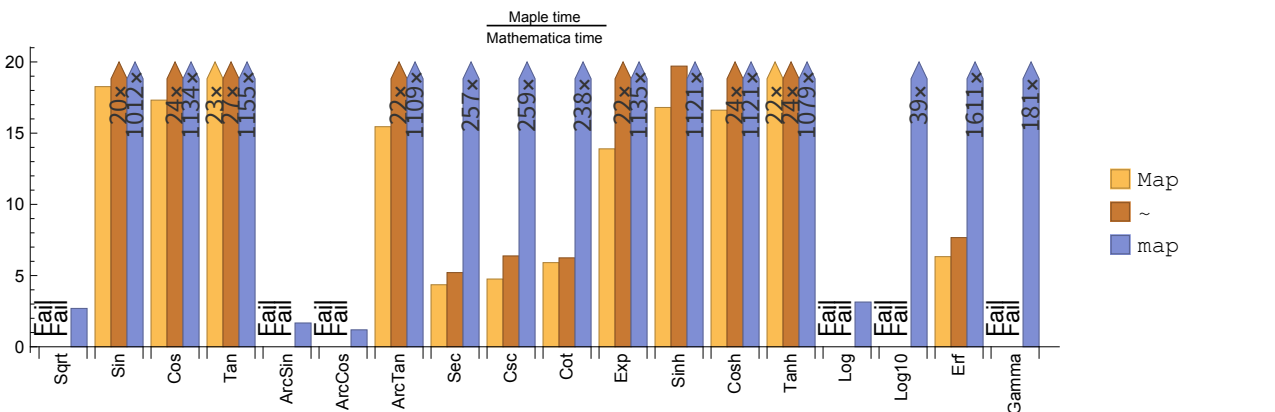
Using the default data type to represent data (as most users would), Maple is generally extremely slow compared to Mathematica, with the exception of Bessel functions.

Times to evaluate functions over 10^7 real numbers are compared below.



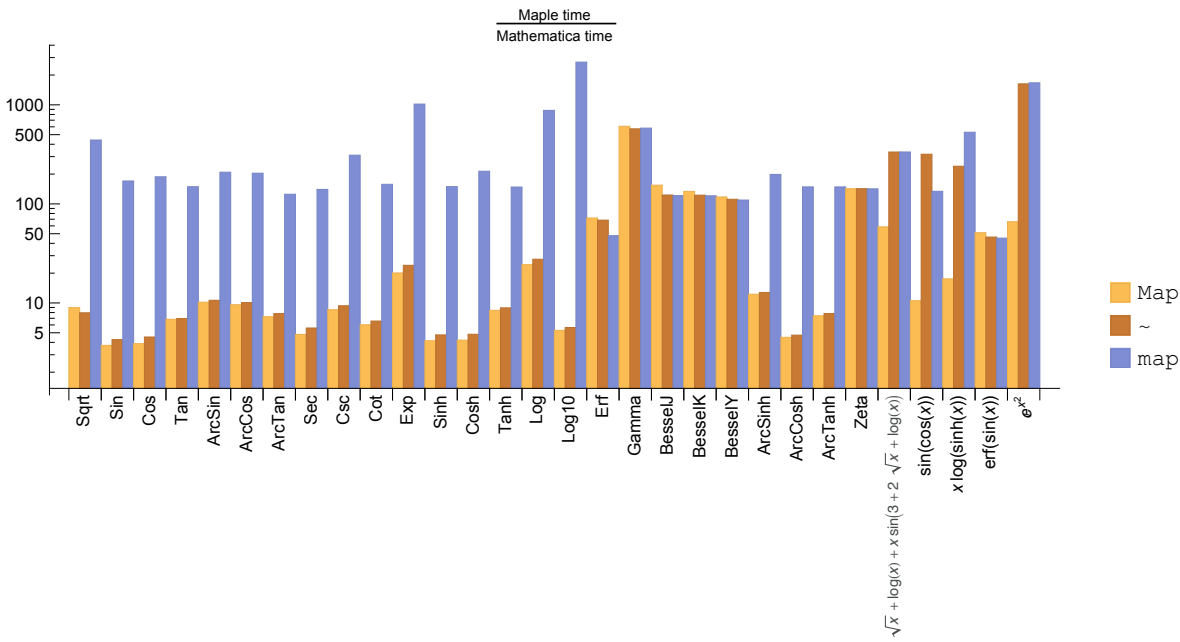
Better performance can be achieved in Maple by manually specifying (or converting) data to the `float[8]` data type. However, this comes at considerable cost to flexibility: firstly, you must ensure that all the input data consists of machine reals. Code will fail if you attempt to store a value that is complex, symbolic, string or NaN value. More importantly, code will also fail completely if any single computation, using `Map` or `~`, returns a value that is not real. This means that you can use this approach only when you can completely predict the domain of both the input and output data.

Using the input dataset in the interval $[-10,10]$, Maple's `Map` and `~` commands fail for the 12 tests that return complex results, and `map`, while more robust, is typically many times slower than Mathematica. It is also important to note that while `Map` and `~` operations are generally much faster than `map` for applying single functions, this advantage largely disappears for applying composite functions to the data.

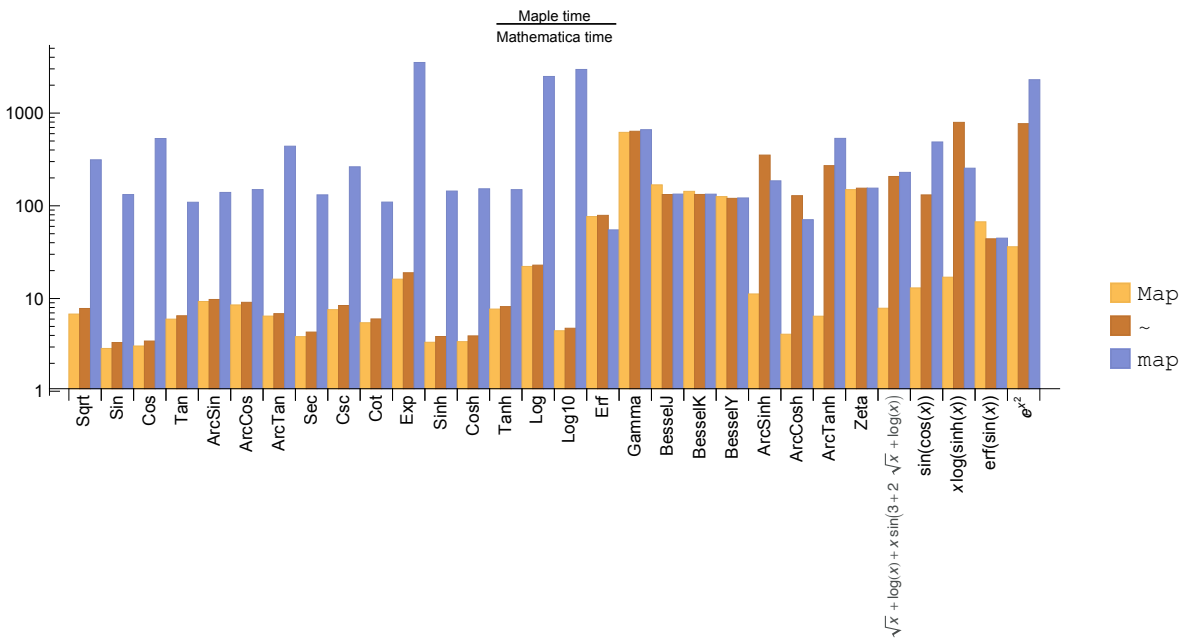


11 Complexes

For operations on complex numbers, Maple is often only modestly slower than Mathematica when using `Map` or `~` to apply single built-in functions. For composite functions and some special functions, the difference is much greater. When using `map` (the direct equivalent of Mathematica's `Map` command), the difference is much greater.

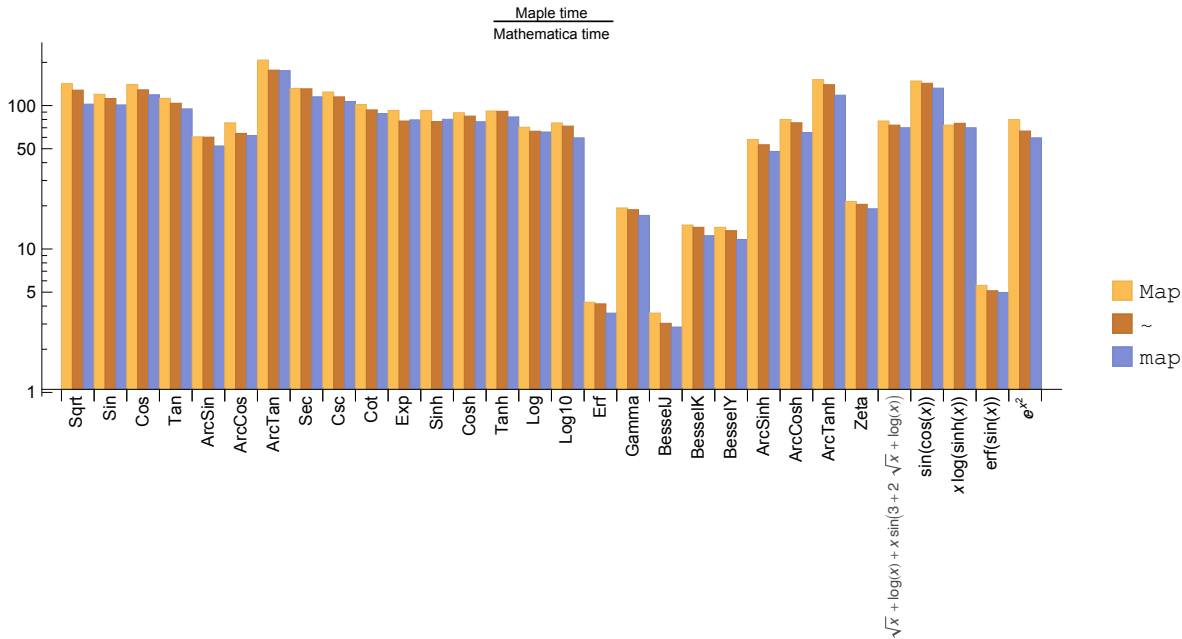


There is a small benefit to using the `complex[8]` data type for Maple's `Map` and `~` commands at the cost of slowing down operations using `map`.



Extended precision

When working in 50-decimal-place extended arithmetic, it makes little difference how you apply functions in Maple. The median performance is 76 times slower than Mathematica.



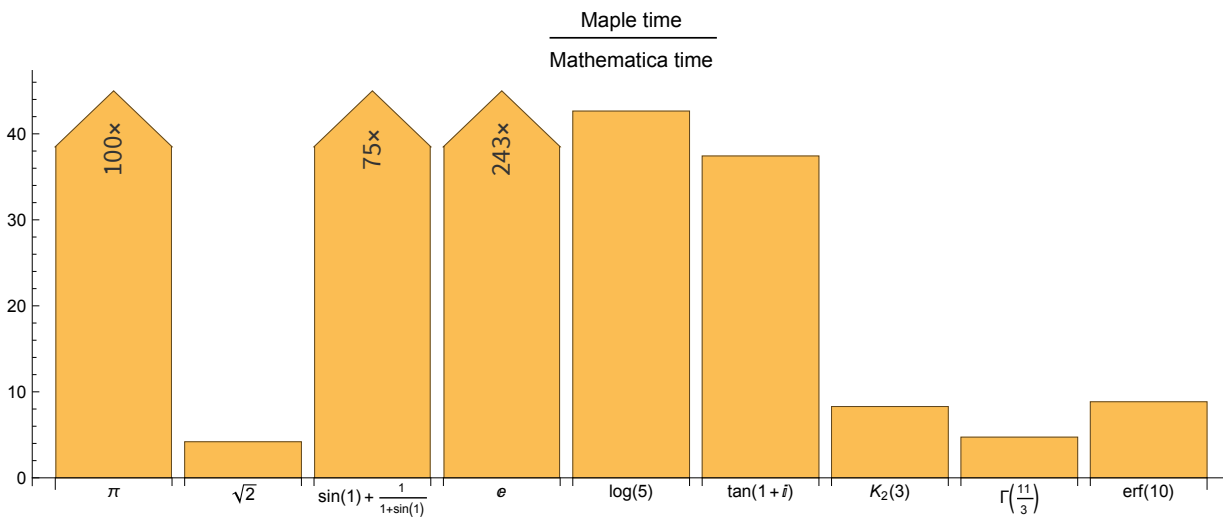
Getting the best performance out of Maple requires significant system knowledge and carefully chosen manual intervention. In contrast, all Mathematica computations were performed using the same function and the same automatic data type, and still outperformed Maple in every test except BesselJ and BesselY.

Implementation notes

All tests performed on a vector of 10^7 uniform random numbers in the interval $[-10,10]$ or $[-10,10]+i*[-10,10]$ for complex data.

High-Precision Evaluation

When evaluating exact numeric expressions to very high precision, Mathematica provides automatic precision tracking to ensure that it achieves the target number of correct digits (as opposed to just using input with the target number of digits). The examples in this test were too simple for this to matter, but despite this extra verification work, Mathematica evaluated the following expressions to high precision with a median performance 37 times faster than Maple.



Implementation notes

BesselK, Gamma and Erf calculations were evaluated to 5,000 digits. Other expressions were evaluated to 1,000,000 digits.

Exact Numeric Functions

While calculating exact numeric results (in terms of rationals, radicals and constants such as π) is arguably symbolic computation, Maple's performance does not appear to improve.

Function	Largest test value	Mathematica speed
BernoulliB	6,000	1.3 times faster
Fibonacci	500,000	5 times faster
HarmonicNumber	10,000	Maple cannot compute for $n > 500$
Zeta	100,000	28 times faster
Binomial	10^{14}	441 times faster

Implementation notes

Maple does not automatically evaluate `zeta(n)` for $n > 50$, so `expand(zeta(n))` is used.

General Testing Methodology

Tests were performed using Windows 7 64-bit with 3.07 GHz quad-core Intel i7 processors with 24 GB of RAM. Tests were performed using Maple 2020 and Mathematica 12.1 default installations, except CUDA tests, which used Maple 15 and Mathematica 8.

Some tests have been scaled back to smaller problems in the Maple version to enable Maple to perform them in the available time and memory. Where standard Maple functions cannot perform the requested computations, tests have been excluded, or, where trivial, alternative Maple implementations have been created. See source code for details. Median values are calculated only from tests that Maple is able to perform.

For most functions, the test suite finds the average time for 5 evaluations for each size of problem, but high-precision evaluations were performed only once in each test run, since both systems cache the results for later reuse.

Maple is unable to perform the entire test suite in 24GB of RAM, so where tests crashed or failed to complete within 24 hours, Maple was restarted and the test repeated. Such failures have not been included in the results. Mathematica tests were performed in a single run.

Relative performance ratios use the largest problem size for each test performed, except where the Maple test has had to be scaled back. In these cases, the available data has been fitted to the curve $ax^2 + bx$, and this model has been used to estimate a time for the largest problem size timed in Mathematica.

Source code for the tests is included so that results can be replicated independently. The entire test program takes approximately 150 minutes in Mathematica and several days in Maple.

Revision Notes

Significant changes since version 5 of this benchmark:

- Equalized test sizes for integer `MatrixPower` and extended-precision `CholeskyDecomposition`
- Removed CUDA test
- Added `Factorial` test

Significant changes since version 4 of this benchmark:

- Reduced the scale of elementary functions evaluated in-place with `reals` test to avoid new crash in Maple 2018

Significant changes since version 3 of this benchmark:

- Increased size of test suite from 579 tests to 587 tests
- Reinstated use of Maple functions `Eigenvalues` and `Eigenvectors`, which no longer crash
- Increased the scale of some smaller tests

Significant changes since version 2 of this benchmark:

- Increased size of test suite from 508 tests to 579 tests
- Increased scale of some tests
- Used new random number generators in Maple 18
- Used deprecated `eigenvalues` and `eigenvectors` commands to work around new crashes in Maple 18
- Increased memory on test machine

Significant changes since version 1 of this benchmark:

- Increased size of test suite from 164 tests to 508 tests
- Tested Maple `map` and "In place" (`~`) command as well as `map`

- Changed data range from [0,1] to [-10,10]
- Reduced the repetitions from 10 to 5 and steps from 20 to 10
- Fixed faulty `LinearProgramming` tests to give the same tasks to both systems and ensure feasibility
- Improved localization within Maple test code
- Removed programming tests that did not relate to numeric computation
- Used more modern test computer with more memory

Appendix: Test Source Code

Mathematica code

Test utilities

```

$HistoryLength = 0;
steps = 10;
repeats = 5;
maxVector = 10^6;
maxMatrix = 2000;
maxSparseMatrix = 20 000;

makeData[type_, i_] := Switch[type,
  "RealVector", RandomReal[{-10, 10}, i],
  "RealMatrix", RandomReal[1, {i, i}],
  "ExtendedMatrix", RandomReal[1, {i, i}, WorkingPrecision → 50],
  "ExtendedMatrix1000", RandomReal[1, {i, i}, WorkingPrecision → 1000],
  "ExtendedVector", RandomReal[1, {i}, WorkingPrecision → 50],
  "ExtendedVector1000", RandomReal[1, {i}, WorkingPrecision → 1000],
  "IntegerMatrix", RandomInteger[100, {i, i}],
  "IntegerVector", RandomInteger[100, i],
  "SparseMatrix", SparseArray[Table[
    {RandomInteger[{1, i}], RandomInteger[{1, i}]} → Random[], {i^2/10 000}], {i, i}],
  "SparseVector", SparseArray[Table[RandomInteger[{1, i]} → Random[],
    {Floor[i/10 000]}], {i}],
  "MediumSparseMatrix", SparseArray[Table[
    {RandomInteger[{1, i}], RandomInteger[{1, i}]} → Random[], {i^2/200}], {i, i}],
  "ComplexMatrix", RandomComplex[{0, 1 + I}, {i, i}],
  "ComplexVector", RandomComplex[{0, 1 + I}, {i}],
  _, Print[type]
];

timedReport[path_, fn_, hi_, type_] := Block[{data},
  Export["Mathematica" <> ToString[$VersionNumber] <> path <> ".txt", Table[{Floor[t],
    Mean[Table[
      data = makeData[type, Floor[t]];
      AbsoluteTiming[fn[data]][[1]], {repeats}]}]
  , {t,  $\frac{hi}{steps}$ , hi,  $\frac{hi}{steps}$ }], "Table"]];

highPrecisionReport[path_, fns_, n_] :=
  Export["Mathematica" <> ToString[$VersionNumber] <> path <> ".txt",
  Map[AbsoluteTiming[N[#, n]][[1]] &, fns]]

```

```

NumericTest[path_, fns_List, n_, type_] :=
  Block[{data}, Export["Mathematica" <> ToString[$VersionNumber] <> path <> ".txt",
    Table[data = makeData[type, n];
      AbsoluteTiming[i[data]][[1]], {i, fns}]]];
evaluateTest[path_, expr_Hold] :=
  Export["Mathematica" <> ToString[$VersionNumber] <> path <> ".txt",
    Apply[List, First /@ Map[AbsoluteTiming, expr]]]

```

Function evaluation

```

fnList = {Sqrt, Sin, Cos, Tan, ArcSin, ArcCos, ArcTan, Sec, Csc, Cot, Exp, Sinh, Cosh,
  Tanh, Log, Log10, Erf, Gamma, BesselJ[0, #] &, BesselK[1, #] &, BesselY[3, #] &,
  ArcSinh, ArcCosh, ArcTanh, Zeta, # Sin[Log[#] + 2 * Sqrt[#] + 3] + Sqrt[#] + Log[#] &,
  Sin[Cos[#]] &, # Log[Sinh[#]] &, Erf[Sin[#]] &, Exp[#^2] &};
NumericTest["ElementaryFunctions", fnList, 10 maxVector, "RealVector"];
NumericTest["ElementaryFunctionsSM", fnList, maxVector, "RealVector"];
NumericTest["ElementaryFunctionsComplex", fnList, maxVector, "ComplexVector"];
NumericTest["ElementaryFunctionsExtended", fnList, maxVector / 10, "ExtendedVector"];
NumericTest["ElementaryFunctionsExtended1000",
  fnList, maxVector / 100, "ExtendedVector1000"];
NumericTest["ElementaryFunctionsSparse", fnList, 100 000 maxVector, "SparseVector"];

```

Real matrix operations

```

timedReport["FourierReal", Fourier, maxVector, "RealVector"];
timedReport["SortReal", Sort, maxVector, "RealVector"];
timedReport["SortCustomReal", SortBy[#, Abs] &, maxVector, "RealVector"];
timedReport["MeanReal", Mean, 10 maxVector, "RealVector"];
timedReport["DotReal", #.# &, maxMatrix, "RealMatrix"];
timedReport["InverseReal", Inverse, maxMatrix, "RealMatrix"];
Quiet@
  timedReport["LinearSolveReal", LinearSolve[#, #[[1]]] &, maxMatrix, "RealMatrix"];
timedReport["CholeskyReal", CholeskyDecomposition[Transpose[#].#] &,
  maxMatrix, "RealMatrix"];
timedReport["MatrixPowerReal", MatrixPower[#, 5] &, maxMatrix, "RealMatrix"];
timedReport["DetReal", Det, maxMatrix, "RealMatrix"];
timedReport["TransposeReal", Transpose, maxMatrix, "RealMatrix"];
timedReport["FlattenReal", Flatten, maxMatrix, "RealMatrix"];
timedReport["EigenvaluesReal", Eigenvalues, maxMatrix / 2, "RealMatrix"];
timedReport["EigenvectorsReal", Eigenvectors, maxMatrix / 2, "RealMatrix"];
timedReport["LinearProgrammingReal",
  LinearProgramming[Abs[#[[1]]], Abs[#], Abs[#[[2]]], Method -> "CLP"] &,
  maxMatrix, "RealMatrix"];
timedReport["ElementPowerReal", #^5 &, maxMatrix, "RealMatrix"];
timedReport["MovingAverageReal", MovingAverage[#, 10] &, maxVector, "RealVector"];
timedReport["FitReal",
  (Function[{data}, Fit[data, x, x][Transpose[{#, #}]]]) &;, 4 * maxVector, "RealVector"];
timedReport["MatrixExpReal", MatrixExp, maxMatrix / 5, "RealMatrix"];
timedReport["CovarianceReal", Covariance, maxMatrix, "RealMatrix"];
timedReport["MatrixRank", MatrixRank, 3 maxMatrix, "RealMatrix"];

```

```

timedReport["FourierComplex", Fourier, maxVector, "ComplexVector"];
timedReport["SortCustomComplex", SortBy[#, Abs] &, maxVector, "ComplexVector"];
timedReport["MeanComplex", Mean, 10 maxVector, "ComplexVector"];
timedReport["DotComplex", #.# &, maxMatrix, "ComplexMatrix"];
timedReport["InverseComplex", Inverse, maxMatrix, "ComplexMatrix"];
timedReport["LinearSolveComplex",
  LinearSolve[#, #[[1]]] &, maxMatrix, "ComplexMatrix"];
timedReport["CholeskyComplex", CholeskyDecomposition[ConjugateTranspose[#].#] &,
  maxMatrix, "ComplexMatrix"];
timedReport["MatrixPowerComplex", MatrixPower[#, 5] &, maxMatrix/2, "ComplexMatrix"];
timedReport["DetComplex", Det, maxMatrix, "ComplexMatrix"];
timedReport["EigenvaluesComplex", Eigenvalues, maxMatrix/2, "ComplexMatrix"];
timedReport["EigenvectorsComplex", Eigenvectors, maxMatrix/2, "ComplexMatrix"];
timedReport["TransposeComplex", Transpose, maxMatrix, "ComplexMatrix"];
timedReport["FlattenComplex", Flatten, maxMatrix, "ComplexMatrix"];
timedReport["ElementPowerComplex", #^5 &, maxMatrix, "ComplexMatrix"];
timedReport["MatrixExpComplex", MatrixExp, maxMatrix/4, "ComplexMatrix"];
timedReport["MatrixRankComplex", MatrixRank, 3 maxMatrix, "ComplexMatrix"]

```

Sparse matrix operations

```

timedReport["DotSparse", #.# &, maxSparseMatrix, "SparseMatrix"];
Quiet@timedReport["LinearSolveSparse",
  LinearSolve[#, #[[1]]] &, maxSparseMatrix/3, "MediumSparseMatrix"];
timedReport["TransposeSparse", Transpose, 2 * maxSparseMatrix, "SparseMatrix"];
timedReport["FlattenSparse", Flatten, maxSparseMatrix, "SparseMatrix"];
timedReport["ElementPowerSparse", #^5 &, maxSparseMatrix, "SparseMatrix"];
timedReport["MeanSparse", Mean, maxVector * 100, "SparseVector"];
timedReport["MatrixPowerSparse",
  MatrixPower[#, 5] &, 2 * maxSparseMatrix/5, "SparseMatrix"];
timedReport["MovingAverageSparse", MovingAverage[#, 10] &, 10 maxVector, "SparseVector"];

```

Integer matrix operations

```

timedReport["DotInteger", #.# &, maxMatrix, "IntegerMatrix"];
timedReport["InverseInteger", Inverse, maxMatrix/25, "IntegerMatrix"];
timedReport["LinearSolveInteger",
  LinearSolve[#, #[[1]]] &, maxMatrix/4, "IntegerMatrix"];
timedReport["MatrixPowerInteger", MatrixPower[#, 5] &, maxMatrix/4, "IntegerMatrix"];
timedReport["DetInteger", Det, 600, "IntegerMatrix"];
timedReport["TransposeInteger", Transpose, maxMatrix, "IntegerMatrix"];
timedReport["FlattenInteger", Flatten, maxMatrix, "IntegerMatrix"];
timedReport["MeanInteger", Mean, maxVector, "IntegerVector"];
timedReport["SortInteger", Sort, maxVector, "IntegerVector"];
timedReport["SortCustomInteger", SortBy[#, Abs] &, maxVector, "IntegerVector"];
timedReport["EigenvaluesInteger", Eigenvalues, maxMatrix/30, "IntegerMatrix"];
timedReport["ElementPowerInteger", #^5 &, maxMatrix, "IntegerMatrix"];
timedReport["MatrixExpInteger", MatrixExp, 40, "IntegerMatrix"];
timedReport["MatrixRankInteger", MatrixRank, maxMatrix, "IntegerMatrix"];

```



```

timedReport["DotExtended", #.# &, maxMatrix/25, "ExtendedMatrix"];
timedReport["InverseExtended", Inverse, maxMatrix/25, "ExtendedMatrix"];
timedReport["CholeskyExtended",
  CholeskyDecomposition[Transpose[#].#] &, maxMatrix/20, "ExtendedMatrix"];
timedReport["EigenvaluesExtended", Eigenvalues, 60, "ExtendedMatrix"];
timedReport["EigenvectorsExtended", Eigenvectors, 80, "ExtendedMatrix"];
timedReport["ElementPowerExtended", #^5 &, maxMatrix/2, "ExtendedMatrix"];
timedReport["LinearSolveExtended",
  LinearSolve[#, #[[1]]] &, maxMatrix/20, "ExtendedMatrix"];
timedReport["DetExtended", Det, maxMatrix/10, "ExtendedMatrix"];
timedReport["TransposeExtended", Transpose, maxMatrix, "ExtendedMatrix"];
timedReport["FlattenExtended", Flatten, maxMatrix, "ExtendedMatrix"];
(*timedReport["FourierExtended", Fourier, maxVector/100, "ExtendedVector"];
Maple converts to floats*)

timedReport["MeanExtended", Mean, maxVector/10, "ExtendedVector"];
timedReport["SortExtended", Sort, 2 * maxVector, "ExtendedVector"];
timedReport["SortCustomExtended", SortBy[#, Abs] &, 2 * maxVector, "ExtendedVector"];
timedReport["EigenvectorsExtended", Eigenvectors, maxMatrix/25, "ExtendedMatrix"];
timedReport["MatrixPowerExtended", MatrixPower[#, 5] &, maxMatrix/25, "ExtendedMatrix"];
timedReport["MatrixExpExtended", MatrixExp, 100, "ExtendedMatrix"];
timedReport["MatrixRankExtended", MatrixRank, maxMatrix/10, "ExtendedMatrix"];

```

1,000-digit precision operations

```

timedReport["DotExtended1000", #.# &, maxMatrix/20, "ExtendedMatrix1000"];
timedReport["InverseExtended1000", Inverse, maxMatrix/25, "ExtendedMatrix1000"];
timedReport["CholeskyExtended1000",
  CholeskyDecomposition[Transpose[#].#] &, 100, "ExtendedMatrix1000"];
timedReport["EigenvaluesExtended1000", Eigenvalues, 80, "ExtendedMatrix1000"];
timedReport["EigenvectorsExtended1000", Eigenvectors, 80, "ExtendedMatrix1000"];
timedReport["ElementPowerExtended1000", #^5 &, maxMatrix/2, "ExtendedMatrix1000"];
timedReport["LinearSolveExtended1000",
  LinearSolve[#, #[[1]]] &, maxMatrix/25, "ExtendedMatrix1000"];
timedReport["DetExtended1000", Det, maxMatrix/10, "ExtendedMatrix1000"];
timedReport["TransposeExtended1000", Transpose, maxMatrix, "ExtendedMatrix1000"];
timedReport["FlattenExtended1000", Flatten, maxMatrix, "ExtendedMatrix1000"];
timedReport["MeanExtended1000", Mean, maxVector/10, "ExtendedVector1000"];
timedReport["SortExtended1000", Sort, maxVector, "ExtendedVector1000"];
timedReport["SortCustomExtended1000",
  SortBy[#, Abs] &, maxVector, "ExtendedVector1000"];
timedReport["MatrixPowerExtended1000", MatrixPower[#, 5] &,
  maxMatrix/25, "ExtendedMatrix1000"];
timedReport["MatrixExpExtended1000", MatrixExp, 60, "ExtendedMatrix1000"];
timedReport["MatrixRankExtended1000", MatrixRank, maxMatrix/20, "ExtendedMatrix1000"];

```

```

evaluateTest["ExactFunctions", Hold[
  Table[BernoulliB[i], {i, 6000}],
  Table[Fibonacci[i], {i, 0, 500 000, 1000}],
  (*Table[HarmonicNumber[i], {i, 10000}], Maple fails*)
  Table[Zeta[i], {i, 0, 100 000, 10 000}],
  Table[Binomial[i^2, i], {i, 1, 10 000}]
]];

```

Random numbers

```

evaluateTest["RandomNumbers", Hold[
  makeData["RealMatrix", 2000],
  makeData["RealMatrix", 2000],
  makeData["IntegerMatrix", 2000],
  makeData["IntegerMatrix", 2000],
  makeData["ExtendedMatrix", 2000],
  makeData["ExtendedMatrix1000", 2000],
  RandomVariate[NormalDistribution[0, 1], 10^7],
  RandomVariate[PoissonDistribution[4], 10^7],
  RandomVariate[BinomialDistribution[10, 0.2], 10^7]
]];

```

High precision

```

highPrecisionReport["ManyDigits",
  {Pi, Sqrt[2], Sin[1] +  $\frac{1}{1 + \text{Sin}[1]}$ , Exp[1], Log[5], Tan[1 + I]}, 1 000 000];
highPrecisionReport["FewerDigits", {BesselK[2, 3], Gamma[11/3], Erf[10]}, 5000];

```

Maple

Test utilities

```

with(LinearAlgebra);
with(DiscreteTransforms);
with(combinat, fibonacci);
with(Statistics);
with(RandomTools[MersenneTwister]);
with(GraphTheory);
with(RandomGraphs);
with(Optimization);
with(RandomTools);
with(stats);
with(combinat);
steps:=10;
repeats:=5;
maxVector:=10^6;
maxMatrix:=2000;
maxSparseMatrix:=20000;

```

```

makeData:=proc(type, size) local dat, i;
  if type="Vector" then dat:=RandomVector[row](size, generator=-10.0..10.0)
  elif type="Matrix" then dat:=Generate(('Matrix')(float(range=-10..10, method=uniform), size, size))
  elif type="VectorFloat8" then dat:=RandomVector[row](size, generator=-10.0..10.0, datatype=float[8])
  elif type="MatrixFloat8" then dat:=RandomMatrix(size, size, generator=-10.0..10.0, datatype=float[8])
  elif type="SparseMatrix" then dat:=Matrix(size, size, storage=sparse);
    for i to floor((1/10000)*size^2) do
      dat[RandomTools[Generate](integer(range=1..size)),
        Generate(integer(range=1..size))]:=2*GenerateFloat()-1 end do
  elif type="MediumSparseMatrix" then dat:=Matrix(size, size, storage=sparse);
    for i to floor((1/200)*size^2) do
      dat[RandomTools[Generate](integer(range=1..size)),
        Generate(integer(range=1..size))]:=20*GenerateFloat()-10 end do
  elif type="SparseVector" then dat:=Vector(size, storage=sparse);
    for i to floor((1/10000)*size) do
      dat[RandomTools[Generate](integer(range=1..size))]:=20*GenerateFloat()-10 end do
  elif type="IntegerMatrix" then dat:=Generate(('Matrix')(integer(range=-10..10), size, size))

```

```

elif type="IntegerVector" then dat:=Generate(("Vector")(integer(range=-10..10), size))
elif type="IntegerMatrix8" then dat:=Generate(("Matrix")(integer(range=-10..10), size, size, datatype=integer[8]))
elif type="IntegerVector8" then dat:=Generate(("Vector")(integer(range=-10..10), size, datatype=integer[8]))
elif type="BigNumberMatrix" then dat:=RandomMatrix(size, size,
    generator=proc(x) 20*GenerateFloat(digits=50)-10 end proc)
elif type="BigNumberVector" then dat:=RandomVector[row](size,
    generator=proc(x) 20*GenerateFloat(digits=50)-10 end proc)
elif type="BigNumberMatrix1000" then dat:=RandomMatrix(size, size,
    generator=proc(x) 20*GenerateFloat(digits=1000)-10 end proc)
elif type="BigNumberVector1000" then dat:=RandomVector[row](size,
    generator=proc(x) 20*GenerateFloat(digits=1000)-10 end proc)
elif type="ComplexVector" then dat:=makeData("Vector", size)+i*makeData("Vector", size)
elif type="ComplexMatrix" then dat:=makeData("Matrix", size)+i*makeData("Matrix", size)
elif type="ComplexVector8" then dat:=makeData("VectorFloat8", size)+i*makeData("VectorFloat8", size)
elif type="ComplexMatrix8" then dat:=makeData("MatrixFloat8", size)+i*makeData("MatrixFloat8", size)
else print(type) endif;
dat end proc;

timedDataOperation:=proc(expr, size, type) local totaltime, data, i;
    totaltime:=0;
    for i to repeats do data:=makeData(type, size);
        totaltime:=totaltime+time[real](expr(data)) end do;
    totaltime/repeats end proc;

timedReport:=proc(filename, expr, hi, type)
    ExportMatrix(cat("Maple", filename, ".txt"),
        convert([seq([floor(s), timedDataOperation('expr', floor(s), type)], s=hi/steps..hi, hi/steps)], Matrix))
end proc;

numericfntest:=proc(fn, n, type) local data;
    data:=makeData(type, n);
    time[real](map(fn, data)) end proc;

numericftest:=proc(file, fns, n, type) ExportMatrix(cat("Maple", file, ".txt"), Matrix([seq(numericfntest(i, n, type), iinfns)])) end proc;
numericftestinplace:=proc(file, fns, n, type)
    ExportMatrix(cat("Maple", file, ".txt"), Matrix([seq(numericftestinplace(i, n, type), iinfns)]))
end proc;
numericftestelementwise:=proc(file, fns, n, type)
    ExportMatrix(cat("Maple", file, ".txt"), Matrix([seq(elementwisefntest(i, n, type), iinfns)]))
end proc;
numericfntestinplace:=proc(fn, n, type) local data;
    data:=makeData(type, n);
    time[real](Map(fn, data)) end proc;
elementwisefntest:=proc(fn, n, type) local data;
    data:=makeData(type, n);
    time[real](fn(data)) end proc;
highPrecisionTest:=proc(file, fns, n)
    ExportMatrix(cat("Maple", file, ".txt"), Matrix([seq(time[real](evalf(i, n)), iinfns)])) end proc;
RandomInteger:=proc(x, y) RandomTools[Generate](integer(range=1..100)) end proc;

fnList:=[sqrt, sin, cos, tan, arcsin, arccos, arctan, sec, csc, cot, exp, sinh, cosh, tanh, log, log10, erf, GAMMA,
    proc(x) BesselJ(0, x) end proc, proc(x) BesselK(1, x) end proc, proc(x) BesselY(3, x) end proc,
    arcsinh, arccosh, arctanh, Zeta, proc(x) x*sin(log(x)+2*sqrt(x)+3)+sqrt(x)+log(x) end proc,
    proc(x) sin(cos(x)) end proc, proc(x) log(sinh(x)) end proc, proc(x) erf(sin(x)) end proc, proc(x) exp(x^2) end proc];

elementwisefnList:=["sqrt", "sin", "cos", "tan", "arcsin", "arccos", "arctan", "sec", "csc", "cot", "exp", "sinh",
    "cosh", "tanh", "log", "log10", "erf", "GAMMA", "proc(x) BesselJ(0, x) end proc",
    "proc(x) BesselK(1, x) end proc", "proc(x) BesselY(3, x) end proc", "arcsinh", "arccosh",
    "arctanh", "Zeta", "proc(x) x*sin(log(x)+2*sqrt(x)+3)+sqrt(x)+log(x) end proc",
    "proc(x) sin(cos(x)) end proc", "proc(x) log(sinh(x)) end proc", "proc(x) erf(sin(x)) end proc",
    "proc(x) exp(x^2) end proc"];

fnListSafe:=["sin", "cos", "tan", "arctan", "sec", "csc", "cot", "exp", "sinh", "cosh", "tanh", "erf", "proc(x) BesselJ(0, x) end proc", "arcsinh", "Zeta",
    "proc(x) sin(cos(x)) end proc", "proc(x) erf(sin(x)) end proc", "abs", "floor", "proc(x) exp(x^2) end proc"];
elementwisefnListSafe:=["sin", "cos", "tan", "arctan", "sec", "csc", "cot", "exp", "sinh", "cosh", "tanh",
    "erf", "proc(x) BesselJ(0, x) end proc", "arcsinh", "Zeta",
    "proc(x) sin(cos(x)) end proc", "proc(x) erf(sin(x)) end proc", "proc(x) exp(x^2) end proc"];

```

Sparse matrix operations

```

timedReport("LinearSolveSparse", 'proc(x) LinearSolve(x, Column(x, 1)) end proc', (1/3)*maxSparseMatrix, "MediumSparseMatrix");
timedReport("DotSparse", 'proc(x) x.xend proc', maxSparseMatrix, "SparseMatrix");
timedReport("TransposeSparse", 'Transpose', 2*maxSparseMatrix, "SparseMatrix");
timedReport("FlattenSparse", 'proc(m) convert(m, Vector[row]) end proc', 10*maxMatrix, "SparseMatrix");
timedReport("MatrixPowerSparse", 'proc(x) x^5end proc', 4*maxMatrix, "SparseMatrix");
timedReport("MeanSparse", 'Mean', 100*maxVector, "SparseVector");
timedReport("ElementPowerSparse", 'proc(m) map(proc(x) x^5end proc, m) end proc', maxSparseMatrix, "SparseMatrix");

```

Real matrix operations

```

timedReport("FourierReal", 'FourierTransform', maxVector, "Vector");
timedReport("SortReal", 'sort', maxVector, "Vector");
timedReport("MeanReal", 'Mean', 2*maxVector, "Vector");
timedReport("DotReal", 'proc(x) x.xend proc', maxMatrix, "Matrix");
timedReport("InverseReal", 'MatrixInverse', maxMatrix, "Matrix");
timedReport("LinearSolveReal", 'proc(x) LinearSolve(x, Column(x, 1)) end proc', maxMatrix, "Matrix");
timedReport("CholeskyReal", 'proc(S) LUDecomposition*(Transpose(S).S, method=Cholesky) end proc', maxMatrix, "Matrix");
timedReport("MatrixPowerReal", 'proc(x) x^5end proc', maxMatrix, "Matrix");
timedReport("DetReal", 'Determinant', maxMatrix, "Matrix");
timedReport("TransposeReal", 'Transpose', maxMatrix, "Matrix");
timedReport("FlattenReal", 'proc(m) convert(m, Vector[row]) end proc', maxMatrix, "Matrix");
timedReport("EigenvaluesReal", 'Eigenvalues', (1/2)*maxMatrix, "Matrix");
timedReport("EigenvectorsReal", 'Eigenvectors', (1/2)*maxMatrix, "Matrix");
timedReport("LinearProgrammingReal", 'proc(x) LPSolve(abs(Row(x, 1)), [-abs(x), -abs(Row(x, 2))], [0, infinity]) end proc',
(1/4)*maxMatrix, "Matrix");
timedReport("ElementPowerReal", 'proc(m) map(proc(x) x^5end proc, m) end proc', (1/2)*maxMatrix, "Matrix");
timedReport("FitReal", 'proc(m) Fit(b*x+a, m, m, x) end proc', maxVector, "Vector");
timedReport("MatrixExpReal", 'MatrixExponential', (1/5)*maxMatrix, "Matrix");
timedReport("CovarianceReal", 'CovarianceMatrix', maxMatrix, "Matrix");
timedReport("MatrixRankReal", 'LinearAlgebra:-Rank', 3*maxMatrix, "Matrix");
timedReport("FourierFloat8", 'FourierTransform', maxVector, "VectorFloat8");
timedReport("SortFloat8", 'sort', maxVector, "VectorFloat8");
timedReport("MeanFloat8", 'Mean', 10*maxVector, "VectorFloat8");
timedReport("DotFloat8", 'proc(x) x.xend proc', maxMatrix, "MatrixFloat8");
timedReport("InverseFloat8", 'MatrixInverse', maxMatrix, "MatrixFloat8");
timedReport("LinearSolveFloat8", 'proc(x) LinearSolve(x, Column(x, 1)) end proc', maxMatrix, "MatrixFloat8");
timedReport("CholeskyFloat8", 'proc(S) LUDecomposition*(Transpose(S).S, method=Cholesky) end proc', maxMatrix, "MatrixFloat8");
timedReport("MatrixPowerFloat8", 'proc(x) x^5end proc', maxMatrix, "MatrixFloat8");
timedReport("DetFloat8", 'Determinant', maxMatrix, "MatrixFloat8");
timedReport("TransposeFloat8", 'Transpose', maxMatrix, "MatrixFloat8");
timedReport("FlattenFloat8", 'proc(m) convert(m, Vector[row]) end proc', maxMatrix, "MatrixFloat8");
timedReport("EigenvaluesFloat8", 'Eigenvalues', (1/2)*maxMatrix, "MatrixFloat8");
timedReport("EigenvectorsFloat8", 'Eigenvectors', (1/2)*maxMatrix, "MatrixFloat8");
timedReport("LinearProgrammingFloat8", 'proc(x) LPSolve(abs(Row(x, 1)), [-abs(x), -abs(Row(x, 2))], [0, infinity]) end proc',
(1/4)*maxMatrix, "MatrixFloat8");
timedReport("ElementPowerFloat8", 'proc(m)map(proc(x) x^5end proc, m) end proc', (1/2)*maxMatrix, "MatrixFloat8");
timedReport("FitFloat8", 'proc(m)Fit(b*x+a, m, m, x) end proc', maxVector, "VectorFloat8");
timedReport("MatrixExpFloat8", 'MatrixExponential', (1/5)*maxMatrix, "MatrixFloat8");
timedReport("CovarianceFloat8", 'CovarianceMatrix', maxMatrix, "MatrixFloat8");
timedReport("MatrixRankFloat8", 'LinearAlgebra:-Rank', 3* maxMatrix, "MatrixFloat8");

timedReport("LinearProgrammingReal", 'proc(x) LPSolve(abs(Row(x, 1)), [-abs(x), -abs(Row(x, 2))], [0, infinity]) end proc', maxMatrix, "Matrix");
timedReport("LinearProgrammingFloat8", 'proc(x) LPSolve(abs(Row(x, 1)), [-abs(x), -abs(Row(x, 2))], [0, infinity]) end proc',
maxMatrix, "MatrixFloat8");
timedReport("SortCustomFloat8", 'proc(data) sort(data, proc(x, y) abs(y)<abs(x) end proc) end proc', (1/25)*maxVector, "VectorFloat8");
timedReport("SortCustomReal", 'proc(data) sort(data, proc(x, y) abs(y)<abs(x) end proc) end proc', (1/25)*maxVector, "Vector");

```

Complex matrix operations

```

timedReport("FourierComplex", 'FourierTransform', maxVector, "ComplexVector");
timedReport("SortComplex", 'sort', maxVector, "ComplexVector");
timedReport("MeanComplex", 'proc(x) add(i, i=x)/Dimension(x) end proc', (1/3)*maxVector, "ComplexVector");
timedReport("DotComplex", 'proc(x) x.xend proc', maxMatrix, "ComplexMatrix");
timedReport("InverseComplex", 'MatrixInverse', maxMatrix, "ComplexMatrix");
timedReport("LinearSolveComplex", 'proc(x) LinearSolve(x, Column(x, 1)) end proc', maxMatrix, "ComplexMatrix");
timedReport("CholeskyComplex", 'proc(S) LUDecomposition(map(conjugate, Transpose(S)).S,
method=Cholesky) end proc', maxMatrix, "ComplexMatrix");
timedReport("MatrixPowerComplex", 'proc(x) x^5end proc', (1/2)*maxMatrix, "ComplexMatrix");
timedReport("DetComplex", 'Determinant', maxMatrix, "ComplexMatrix");
timedReport("EigenvaluesComplex", 'Eigenvalues', (1/2)*maxMatrix, "ComplexMatrix");
timedReport("EigenvectorsComplex", 'Eigenvectors', (1/2)*maxMatrix, "ComplexMatrix");
timedReport("TransposeComplex", 'Transpose', maxMatrix, "ComplexMatrix");
timedReport("FlattenComplex", 'proc(m) convert(m, Vector[row]) end proc', maxMatrix, "ComplexMatrix");
timedReport("ElementPowerComplex", 'proc(m) map(proc(x)x^5end proc, m) end proc', (1/4)*maxMatrix, "ComplexMatrix");
timedReport("MatrixExpComplex", 'MatrixExponential', (1/4)*maxMatrix, "ComplexMatrix");
timedReport("MatrixRankComplex", 'LinearAlgebra:-Rank', 3*maxMatrix, "ComplexMatrix");
timedReport("FourierComplex8", 'FourierTransform', maxVector, "ComplexVector8");
timedReport("SortComplex8", 'sort', maxVector, "ComplexVector");
timedReport("MeanComplex8", 'proc(x) add(i, i=x)/Dimension(x) end proc', (1/3)*maxVector, "ComplexVector8");
timedReport("DotComplex8", 'proc(x) x.xend proc', maxMatrix, "ComplexMatrix8");
timedReport("InverseComplex8", 'MatrixInverse', maxMatrix, "ComplexMatrix8");
timedReport("LinearSolveComplex8", 'proc(x) LinearSolve(x, Column(x, 1)) end proc', maxMatrix, "ComplexMatrix8");
timedReport("CholeskyComplex8", 'proc(S) LUDecomposition(map(conjugate, Transpose(S)).S,
method=Cholesky) end proc', maxMatrix, "ComplexMatrix8");
timedReport("MatrixPowerComplex8", 'proc(x) x^5end proc', (1/2)*maxMatrix, "ComplexMatrix8");
timedReport("DetComplex8", 'Determinant', maxMatrix, "ComplexMatrix8");
timedReport("EigenvaluesComplex8", 'Eigenvalues', (1/2)*maxMatrix, "ComplexMatrix8");
timedReport("EigenvectorsComplex8", 'Eigenvectors', (1/2)*maxMatrix, "ComplexMatrix8");
timedReport("TransposeComplex8", 'Transpose', maxMatrix, "ComplexMatrix8");

```

```

timedReport("FlattenComplex8", 'proc(m) convert(m, Vector[row]) end proc', 3*maxMatrix*(1/4), "ComplexMatrix8");
timedReport("ElementPowerComplex8", 'proc(m) map(proc(x)x^5end proc, m) end proc', (1/4)*maxMatrix, "ComplexMatrix8");
timedReport("MatrixExpComplex8", 'MatrixExponential', (1/4)*maxMatrix, "ComplexMatrix8");
timedReport("MatrixRankComplex8", 'LinearAlgebra:-Rank', 3*maxMatrix, "ComplexMatrix8");
timedReport("SortCustomComplex", 'proc(data) sort(data, proc(x, y) abs(y)<abs(x) end proc) end proc',
(1/25)*maxVector, "ComplexVector");
timedReport("SortCustomComplex8", 'proc(data) sort(data, proc(x, y) abs(y)<abs(x) end proc) end proc',
(1/25)*maxVector, "ComplexVector8");

```

Integer matrix operations

```

timedReport("DotInteger", 'proc(x) x.x end proc', maxMatrix, "IntegerMatrix");
timedReport("InverseInteger", 'MatrixInverse', (1/25)*maxMatrix, "IntegerMatrix");
timedReport("LinearSolveInteger", 'proc(x) LinearSolve(x, Column(x, 1)) end proc', (1/4)*maxMatrix, "IntegerMatrix");
timedReport("MatrixPowerInteger", 'proc(x) x^5end proc', (1/4)*maxMatrix, "IntegerMatrix");
timedReport("DetInteger", 'Determinant', 600, "IntegerMatrix");
timedReport("TransposeInteger", 'Transpose', maxMatrix, "IntegerMatrix");
timedReport("FlattenInteger", 'proc(m) convert(m, Vector[row]) end proc', maxMatrix, "IntegerMatrix");
timedReport("MeanInteger", 'proc(x) add(i, i=x)/Dimension(x) end proc', maxVector, "IntegerVector");
timedReport("SortInteger", 'sort', maxVector, "IntegerVector");
timedReport("EigenvaluesInteger", 'Eigenvalues', (1/30)*maxMatrix, "IntegerMatrix");
timedReport("ElementPowerInteger", 'proc(m) map(proc(x) x^5 end proc, m) end proc', maxMatrix, "IntegerMatrix");
timedReport("DotInteger8", 'proc(x) x.x end proc', maxMatrix, "IntegerMatrix8");
timedReport("LinearSolveInteger8", 'proc(x) LinearSolve(x, Column(x, 1)) end proc', (1/4)*maxMatrix, "IntegerMatrix8");
timedReport("MatrixPowerInteger8", 'proc(x) x^5 end proc', (1/4)*maxMatrix, "IntegerMatrix8");
timedReport("DetInteger8", 'Determinant', 600, "IntegerMatrix8");
timedReport("TransposeInteger8", 'Transpose', maxMatrix, "IntegerMatrix8");
timedReport("FlattenInteger8", 'proc(m) convert(m, Vector[row]) end proc', maxMatrix, "IntegerMatrix8");
timedReport("MeanInteger8", 'proc(x) add(i, i=x)/Dimension(x) end proc', maxVector, "IntegerVector8");
timedReport("SortInteger8", 'sort', maxVector, "IntegerVector8");
timedReport("EigenvaluesInteger8", 'Eigenvalues', (1/30)*maxMatrix, "IntegerMatrix8");
timedReport("ElementPowerInteger8", 'proc(m) map(proc(x) x^5end proc, m) end proc', maxMatrix, "IntegerMatrix8");
steps:=3;
timedReport("MatrixExpInteger8", 'MatrixExponential', 3, "IntegerMatrix8");
timedReport("MatrixExpInteger", 'MatrixExponential', 3, "IntegerMatrix");
steps:=10;
timedReport("SortCustomInteger", 'proc(data) sort(data, proc(x, y) abs(y)<abs(x) end proc) end proc', (1/25)*maxVector, "IntegerVector");
timedReport("SortCustomInteger8", 'proc(data) sort(data, proc(x, y) abs(y)<abs(x) end proc) end proc', 100000, "IntegerVector8");
timedReport("MatrixRankInteger", 'LinearAlgebra:-Rank', maxMatrix/5, "IntegerMatrix");
timedReport("MatrixRankInteger8", 'LinearAlgebra:-Rank', maxMatrix/5, "IntegerMatrix8");

```

Exact functions

```

ExportMatrix("MapleExactFunctions.txt",
Matrix([[time[real](seq(bernoulli(i), i=1..6000)),
time[real](seq(fibonacci(i), i=1..500000, 1000)),
time[real](seq(expand(Zeta(i)), i=0..100000, 10000)),
time[real](seq(binomial(i^2, i), i=1..10000))
]]));

```

Random numbers

```

ExportMatrix("MapleRandomNumbers.txt",
Matrix([[time[real](makeData("Matrix", 2000)),
time[real](makeData("MatrixFloat8", 2000)),
time[real](makeData("IntegerMatrix", 2000)),
time[real](makeData("IntegerMatrix8", 2000)),
time[real](makeData("BigNumberMatrix", 2000)),
time[real](makeData("BigNumberMatrix1000", 2000)),
time[real](Sample(RandomVariable(Normal(0, 1)), 10^7)),
time[real](Sample(RandomVariable(Poisson(4)), 10^7)),
time[real](Sample(RandomVariable(BinomialDistribution(10, .2)), 10^7))
]]));

```

Function evaluation

```

numericest("ElementaryFunctionsFloat8", fnList, 10*maxVector, "VectorFloat8");
numericest("ElementaryFunctionsComplex", fnList, maxVector, "ComplexVector");
numericest("ElementaryFunctionsComplex8", fnList, maxVector, "ComplexVector8");
numericest(inplace("ElementaryFunctionsInPlaceFloat8", fnListSafe, 10*maxVector, "VectorFloat8");
numericest(inplace("ElementaryFunctionsInPlaceComplex", fnList, maxVector, "ComplexVector");
numericest(inplace("ElementaryFunctionsInPlaceComplex8", fnList, maxVector, "ComplexVector8");
# numericest(inplace("ElementaryFunctionsInPlace", fnList, 10*maxVector, "Vector"); #crash in Maple 2018
numericest(inplace("ElementaryFunctionsInPlaceSM", fnList, maxVector, "Vector");
numericest(elementwise("ElementaryFunctionsElementwiseFloat8", elementwisefnListSafe, 10*maxVector, "VectorFloat8");
numericest(elementwise("ElementaryFunctionsElementwiseComplex", elementwisefnList, maxVector, "ComplexVector");

```

```

numerictestelementwise("ElementaryFunctionsElementwiseComplex8", elementwisefnList, maxVector, "ComplexVector8");
numerictestelementwise("ElementaryFunctionsElementwise", elementwisefnList, 10*maxVector, "Vector");
numerictestinplace("ElementaryFunctionsInPlaceSparse", fnList, 10000*maxVector, "SparseVector");
numerictest("ElementaryFunctions", fnList, 10*maxVector, "Vector");

```

High precision

```

highPrecisionTest("ManyDigits", ['Pi', 'sqrt(2)', 'sin(1)+1/(1+sin(1))', 'exp(1)', 'log(5)', 'tan(1+l)'], 1000000);
highPrecisionTest("FewerDigits", ['BesselK(2, 3)', 'GAMMA(11/3)', 'erf(10)'], 5000);

```

50-digit precision operations

```

Digits:=50;
timedReport("DotExtended", 'proc(x) x.x end proc', (1/25)*maxMatrix, "BigNumberMatrix");
timedReport("InverseExtended", 'MatrixInverse', (1/25)*maxMatrix, "BigNumberMatrix");
timedReport("EigenvaluesExtended", 'Eigenvalues', 60, "BigNumberMatrix");
timedReport("LinearSolveExtended", 'proc(x) LinearSolve(x, Column(x, 1)) end proc', (1/25)*maxMatrix, "BigNumberMatrix");
timedReport("CholeskyExtended", 'proc(S) LUdecomposition*(Transpose(S).S,
method=Cholesky) end proc', (1/20)*maxMatrix, "BigNumberMatrix");
timedReport("MatrixPowerExtended", 'proc(x) x^5 end proc', (1/25)*maxMatrix, "BigNumberMatrix");
timedReport("DetExtended", 'Determinant', (1/10)*maxMatrix, "BigNumberMatrix");
timedReport("TransposeExtended", 'Transpose', maxMatrix, "BigNumberMatrix");
timedReport("FlattenExtended", 'proc(m) convert(m, Vector[row]) end proc', maxMatrix, "BigNumberMatrix");
timedReport("SortExtended", 'sort', maxVector, "BigNumberVector");
timedReport("MeanExtended", 'proc(x) add(i, i=x)/Dimension(x) end proc', (1/10)*maxVector, "BigNumberVector");
timedReport("EigenvectorsExtended", 'Eigenvectors', (1/25)*maxMatrix, "BigNumberMatrix");
timedReport("ElementPowerExtended", 'proc(m) map(proc(x) x^5 end proc, m) end proc', (1/2)*maxMatrix, "BigNumberMatrix");
timedReport("MatrixExpExtended", 'MatrixExponential', 60, "BigNumberMatrix");
timedReport("SortCustomExtended", 'proc(data) sort(data, proc(x, y) abs(y)<abs(x) end proc) end proc', maxVector, "BigNumberVector");
timedReport("MatrixRankExtended", 'LinearAlgebra:-Rank', maxMatrix/10, "BigNumberMatrix");

numerictest("ElementaryFunctionsExtended", fnList, (1/10)*maxVector, "BigNumberVector");
numerictestelementwise("ElementaryFunctionsElementwiseExtended", elementwisefnList, (1/10)*maxVector, "BigNumberVector");
numerictestinplace("ElementaryFunctionsInPlaceExtended", fnList, (1/10)*maxVector, "BigNumberVector");

```

1,000-digit precision operations

```

Digits:=1000;
timedReport("DotExtended1000", 'proc(x) x.x end proc', (1/20)*maxMatrix, "BigNumberMatrix1000");
timedReport("InverseExtended1000", 'MatrixInverse', (1/25)*maxMatrix, "BigNumberMatrix1000");
timedReport("EigenvaluesExtended1000", 'Eigenvalues', 60, "BigNumberMatrix1000");
timedReport("LinearSolveExtended1000", 'proc(x) LinearSolve(x, Column(x, 1)) end proc', (1/25)*maxMatrix, "BigNumberMatrix1000");
timedReport("CholeskyExtended1000", 'proc(S) LUdecomposition*(Transpose(S).S, method=Cholesky) end proc',
(1/20)*maxMatrix, "BigNumberMatrix1000");
timedReport("MatrixPowerExtended1000", 'proc(x) x^5 end proc', (1/25)*maxMatrix, "BigNumberMatrix1000");
timedReport("DetExtended1000", 'Determinant', (1/10)*maxMatrix, "BigNumberMatrix1000");
timedReport("TransposeExtended1000", 'Transpose', maxMatrix, "BigNumberMatrix1000");
timedReport("FlattenExtended1000", 'proc(m) convert(m, Vector[row]) end proc', maxMatrix, "BigNumberMatrix1000");
timedReport("SortExtended1000", 'sort', maxVector, "BigNumberVector1000");
timedReport("MeanExtended1000", 'proc(x) add(i, i=x)/Dimension(x) end proc', (1/10)*maxVector, "BigNumberVector1000");
timedReport("EigenvectorsExtended1000", 'Eigenvectors', (1/25)*maxMatrix, "BigNumberMatrix1000");

timedReport("ElementPowerExtended1000", 'proc(m) map(proc(x) x^5 end proc, m) end proc', (1/2)*maxMatrix, "BigNumberMatrix1000");
timedReport("MatrixExpExtended1000", 'MatrixExponential', 60, "BigNumberMatrix1000");
timedReport("SortCustomExtended1000", 'proc(data) sort(data, proc(x, y) abs(y)<abs(x) end proc) end proc',
maxVector, "BigNumberVector1000");
timedReport("MatrixRankExtended1000", 'LinearAlgebra:-Rank', maxMatrix/20, "BigNumberMatrix1000");

```